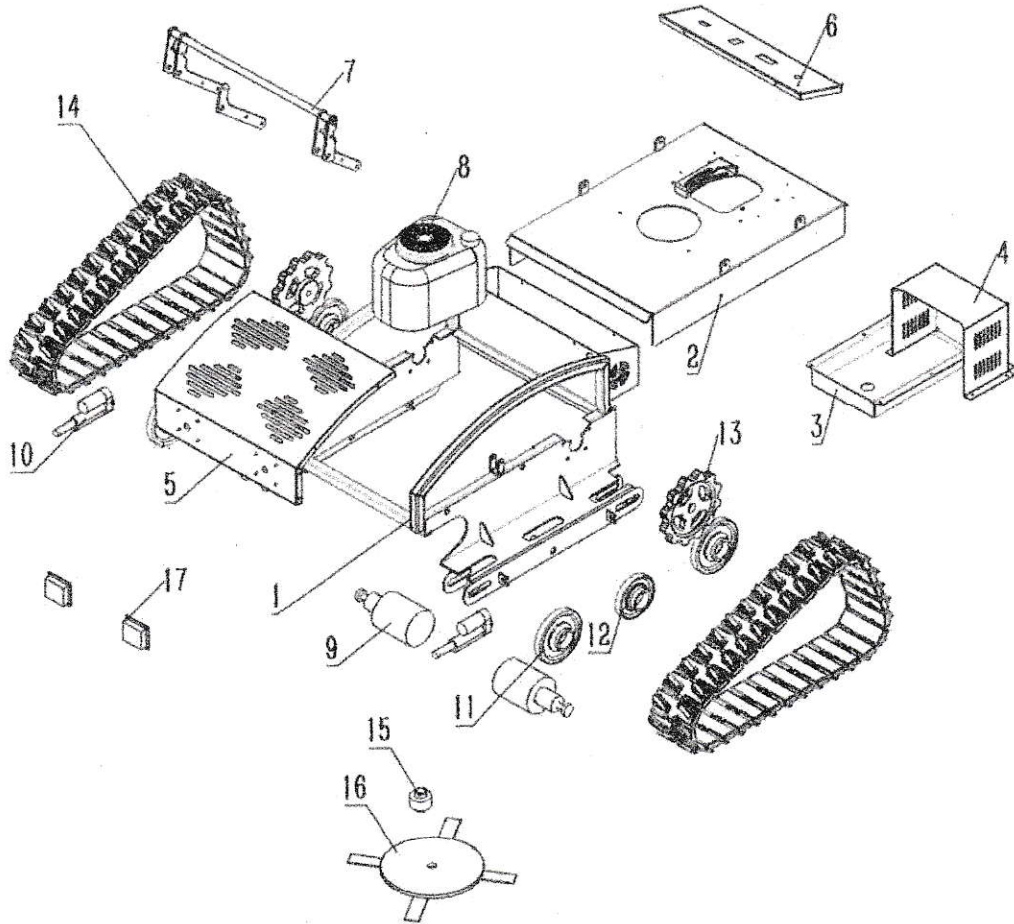


KENTUCKY IMPLEMENT
(BRANCH: WILDCAT MACHINES)

REMOTE CONTROL MOWER X-1 AND X-2 MAINTANANCE MANUAL

Schematic diagram of decomposition



Instructions for lawn mower

1、 Preparation before starting the remote control lawn mower

(1) Be sure to confirm the tightness of the screws of each component before starting work.

(2) Turn on the machine's power key switch, pull the right control lever backward to hold it, and then press the remote control switch to turn on the remote control.

(3) When the remote control is turned on, there will be a 'di' sound, indicating that the machine matches the remote control normally.

(4) Engine start;

- a、 Release the brake on the right side of the engine (the flameout switch is also disconnected);
- b、 Turn the left throttle to the end counterclockwise (this opens the engine throttle at the same time);
- c、 Pull the pull rope hard to start the engine;
- d、 After starting the engine, adjust the throttle to the proper speed in time;
- e、 Operate the remote control to mow the grass

2、 Remote control instructions:

D/R switch (large and small rudder): adjust the walking speed of the machine (the factory default is high gear)

The left joystick controls the machine to walk forward and backward, and the right joystick controls left and right turns.

5 channels (two-stage switch): the cutter head is raised and lowered to adjust the cutting height of the cutter head.

Rudder fine-tuning (left and right adjustment): When adjusting the walking speed of the machine, the ESC inside the machine will make a "drip" sound. At this time, you can use the "rudder fine-tuning" button until the ESC inside the machine does not make a sound.

Power switch: Push up to turn on the remote control, and pull down to turn off the remote.

Channel switch (picture below)



Start relay

Maintenance of the engine: Engine maintenance schedule

Engine maintenance schedule	Per use	5 hours or the first month originally used	25 hours or every 3 months	50 hours or every 6 months	100 hours or every year
Item					

Engine oil	Check the oil level	<input checked="" type="checkbox"/>				
	replace		<input checked="" type="checkbox"/>		<input checked="" type="checkbox"/> (1)	
Air filter	examination	<input checked="" type="checkbox"/>				
	clean			<input checked="" type="checkbox"/> (2)		
	replace				<input checked="" type="checkbox"/> @	
Spark plug	Check-cleaning				<input checked="" type="checkbox"/>	
	Replace					<input checked="" type="checkbox"/>
Idle speed	Check-adjustment				<input checked="" type="checkbox"/>	
Valve gap	Check-adjustment					<input checked="" type="checkbox"/> (3)
Combustion chamber	clean	Every 100 hours (3)				
Oil tube	examination	Replace every 2 years (if necessary) (3)				

instruction:

Just replace the filter element

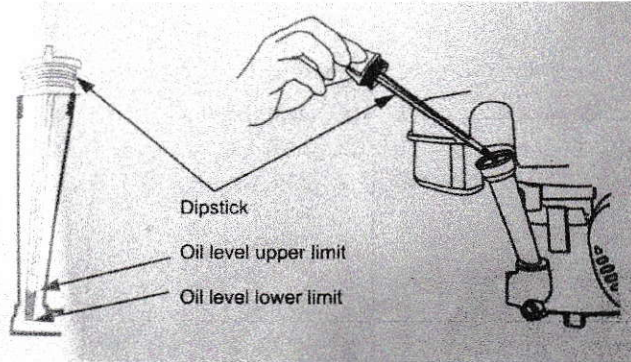
(1) Change the oil every 25 hours under high load or high temperature

(2) In the case of more dust, the cleaning frequency can be increased, and it can be replaced if necessary

(3) Unless special tools and machine repair capabilities are available, these items should be maintained by the company's authorized dealers

Instructions:

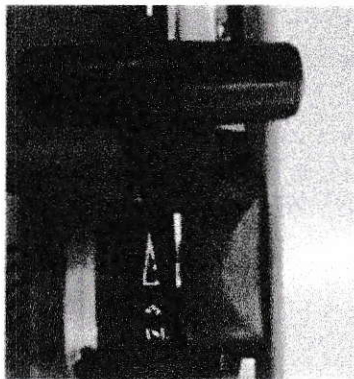
- 1: Check the fuel condition. It is recommended to use clean, fresh, unleaded gasoline with an octane number greater than or equal to 92. The fuel tank volume is generally 1L.
2. Check machine oil situation, the engine does not add oil during transport, and there must be sufficient oil before starting the engine. Recommended oil models SAE10W-30.
 - a) Turn off the engine and put it horizontally on the ground.
 - b) Remove the oil dipstick from the oil filler and wipe it clean



Picture 1

- c) Insert the machine oil, when the oil quality neck is just in contact with the oil supply tube, check the oil level.
 - d) If the oil level is too low, add the recommended engine oil to the upper limit of the oil level, don't add too much
 - e) Replace the machine oil and tighten, as shown picture 1

3: Turn off the power switch button (START) on the operation panel, pull out the emergency stop switch, increase the throttle speed switch appropriately, you can pull the engine or use the key switch to start the engine, when you need to turn off the engine, press the emergency stop switch The engine can be shut down by pressing down. Picture 2



Accelerator speed control switch

Picture 2



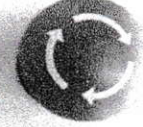
Key switch

Closure

Open



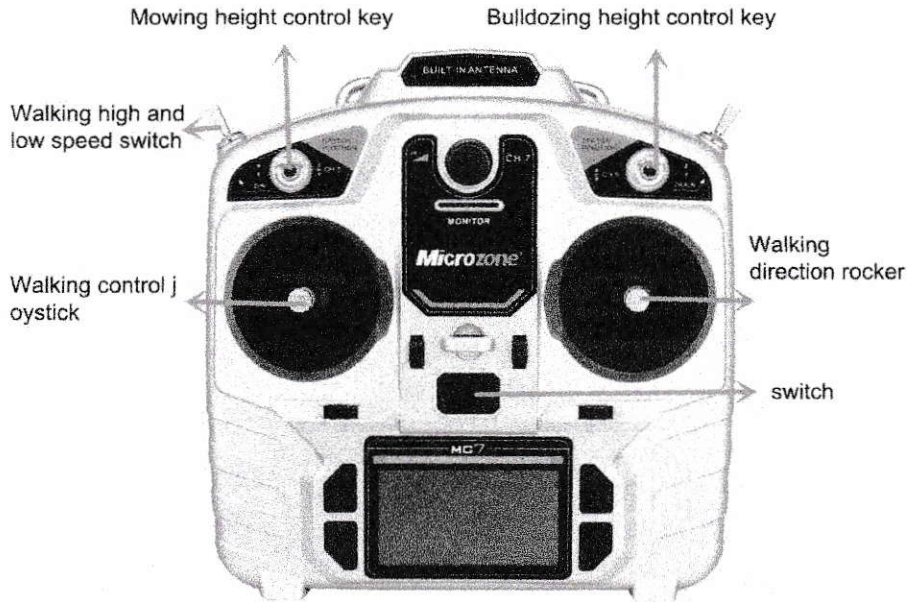
Power conversion switch



Emergency stop switch

Operation panel

4. After the engine starts, open the power conversion switch, take out the remote control, open the power button, and the operation is shown.

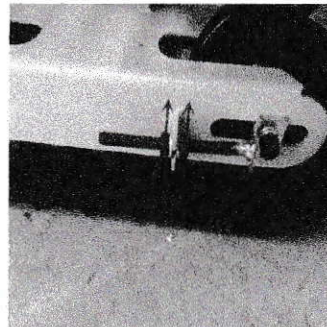
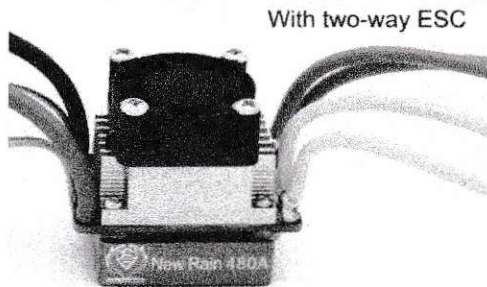


Picture 3

Maintenance instructions:

1. The mower walks more slower or slowed by the mowers.

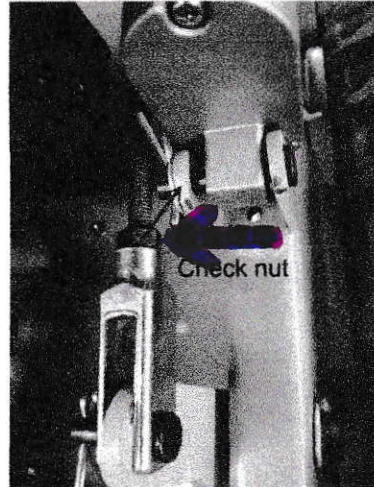
- a) Check whether the walking high and low speed switch (Figure 3) is in a low speed or high speed state. If it is in a low speed state, turn the switch upwards,
- b) If it is high speed, you need to open the operation panel and check the fuse box to see if there is a red light. If there is a red light, you need to change the corresponding fuse.
- c) Check whether the brushed two-way ESC is running again. If the fan does not run, you need to replace the brushed two-way ESC. If the fan is running, you need to check whether the output voltage of the brushed two-way ESC is DC 12V when it is working. If there is no DC12V, you need to replace the brushed two-way ESC
- d) Check the tightness of the two crawlers. If there is a crawler for comparison, you need to adjust the lower bolt rod for adjustment.



2. Troubleshoot the lawn mower's cutting height cannot be adjusted

a) First check whether the electric push rods are obstructing each other, especially the nuts. If they are loose, they need to be tightened. (Picture 4)

Picture 4



b) When operating the electric push rod, click the walking rocker, and then press the mowing height key, sometimes it will work.

c) Check whether the output voltage of the brushed two-way ESC is DC 12V when working, if there is no DC12V, you need to replace the brushed two-way ESC

3. Troubleshooting of generator

a) External regulator generator: When the engine is running, observe whether the power display is greater than 14V. If it is greater than 14V, it proves that the generator can charge the battery, which means it is normal. Otherwise, it is necessary to check whether the V-belt of the generator has fallen off, if it falls off Need to reinstall.

b) The built-in regulator generator can also be judged according to the above method. You can also observe whether the indicator light is on. The indicator light is on when the engine is not started, and the indicator light is off after the engine is started, which means it is normal, otherwise the generator is faulty.

Special attention: The built-in regulator is different from the external regulator. The built-in regulator has an indicator light, while the external regulator has no indicator light.

4. Troubleshoot the operation panel or equipment without power supply

g) Check whether the power cord of the battery indicator is loose, if it is loose, you need to reconnect it.

h) Check whether the wires of the starting relay are disconnected or loose. Use a multimeter to measure whether there is a DC input voltage of 12V. If not, replace the starting relay. As shown below